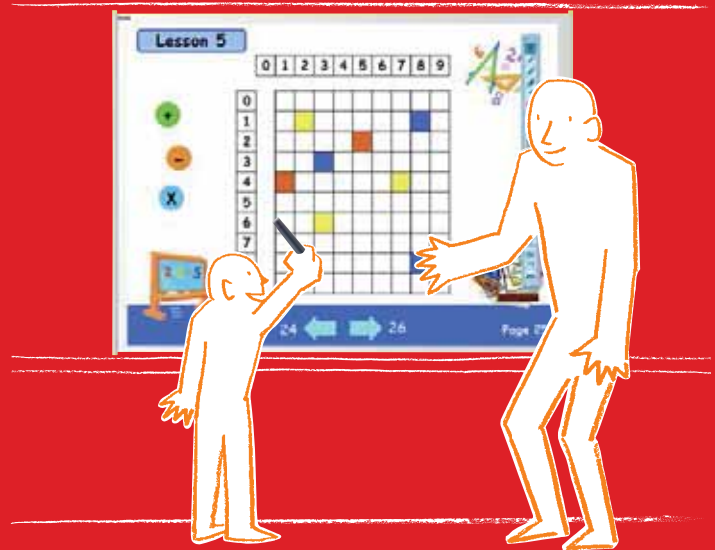
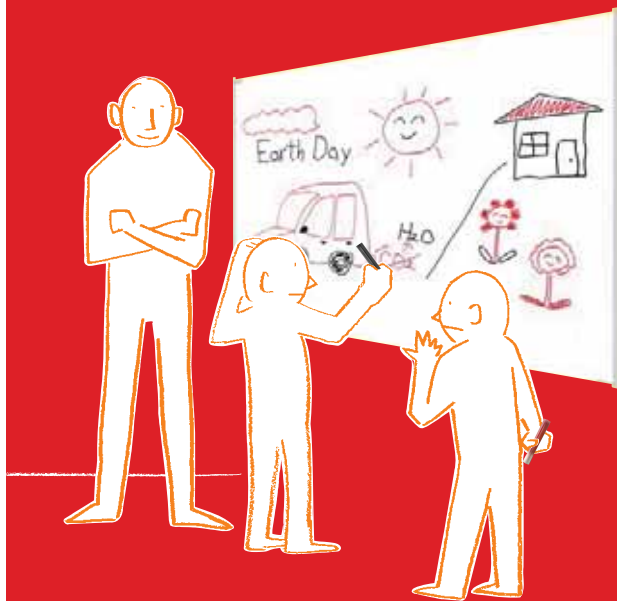


PLUS



**A flexible Interactive Whiteboard
that fits into your world.**



PLUS Wireless Interactive Panel

UPIC

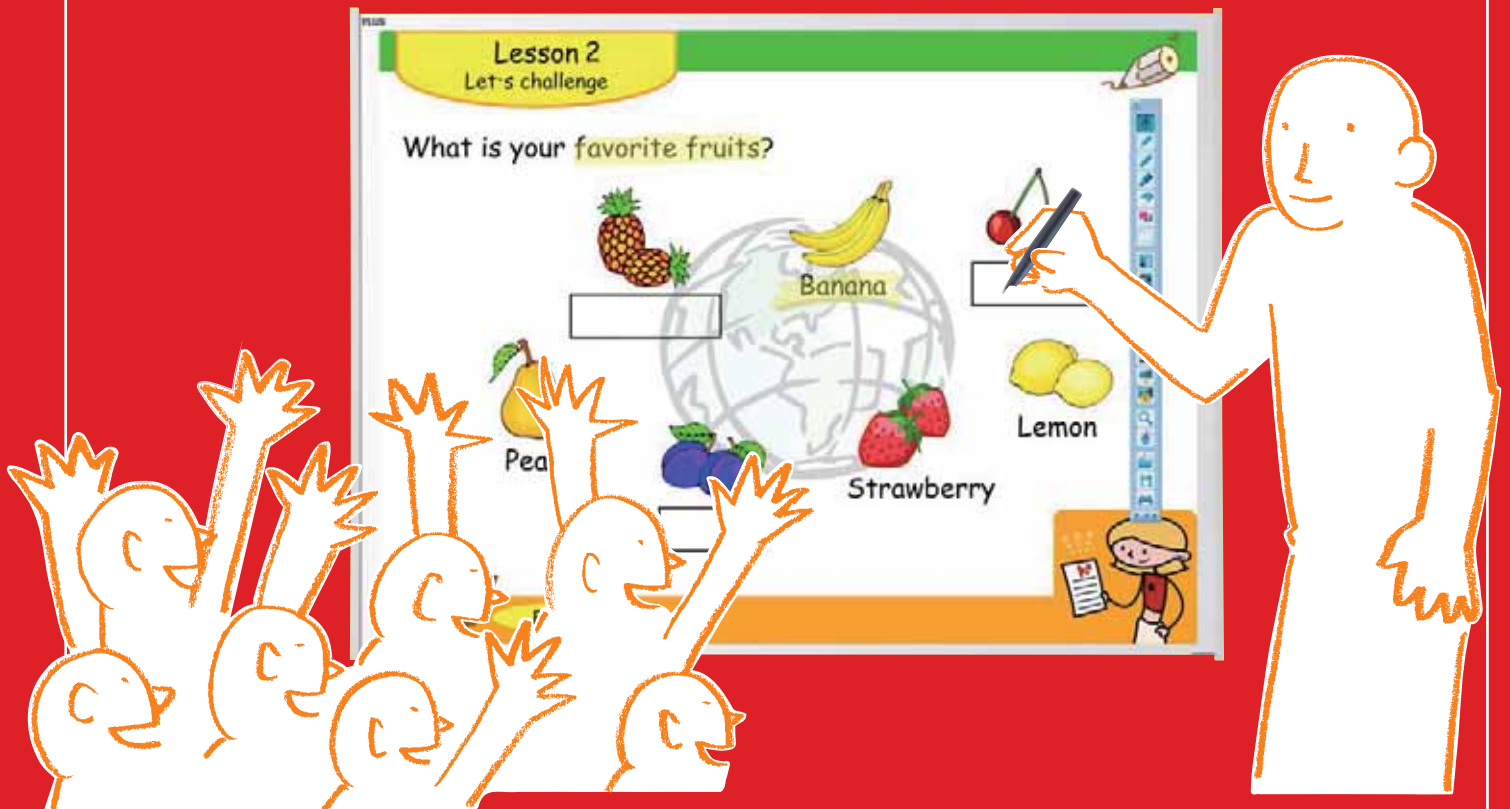
ltra ortable nteractive ommunication



More engaging lessons result in improved understanding.

“PLUS Wireless Interactive Panel”

UPIC



The Interactive Whiteboard has created a new way of teaching. The ability to project learning material and then interact with it is becoming increasingly popular. However, conventional Interactive Whiteboards are just that: boards. Because of this, they lack mobility.

The PLUS Wireless Interactive Panel **UPIC** offers you greater freedom in the way in which you teach. The winning combination of being both wireless and portable creates an easy-to-use interactive classroom.

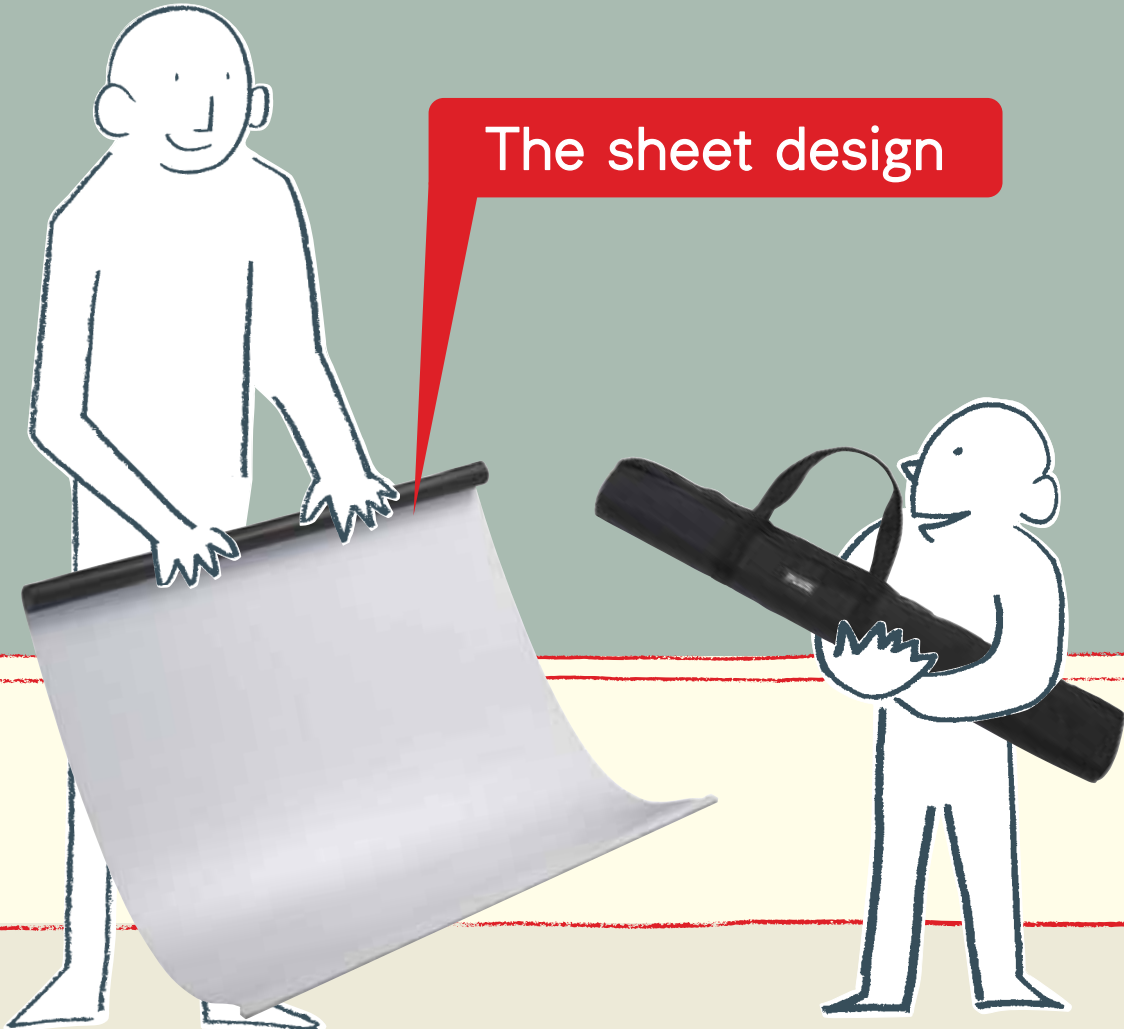


Easy to use - Whenever & wherever you like.

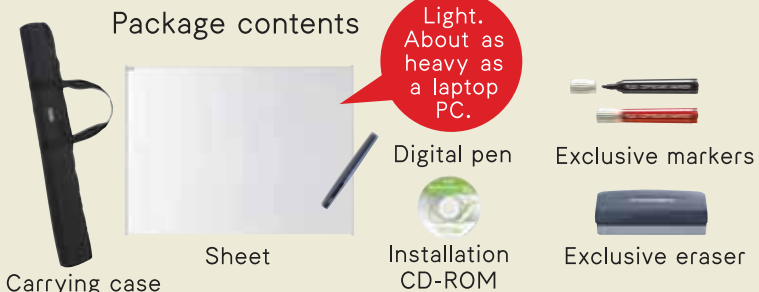
Its thin, lightweight design makes it extremely portable.

Take it with you anywhere. To set it up, just attach the sheet to a chalkboard or whiteboard. The UPIC can be quickly set up in the short period of time between classes so that you can begin teaching immediately.

The sheet design



Package contents



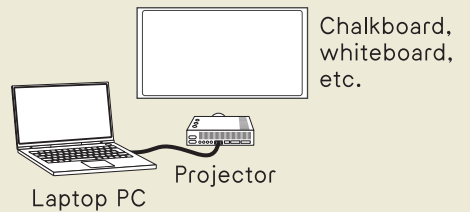
Light.
About as heavy as
a laptop
PC.

Digital pen

Exclusive markers

Exclusive eraser

Works with equipments
you already have.



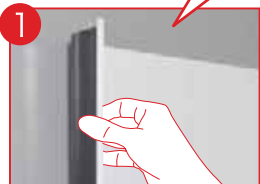
Chalkboard,
whiteboard,
etc.

Laptop PC

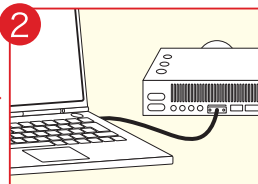
Projector

• All items fit neatly into the carrying case.

The quick set-up process.



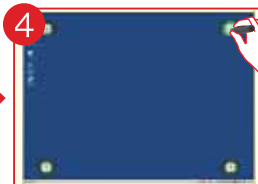
1 The magnetic sheet
attaches easily.



2 Start up your computer
and projector.



3 Remove the digital pen's
cap. The "calibration
pattern" appears
automatically.



4 Tap the four marks in the
corners of the projected
image to calibrate the
computer and projector.



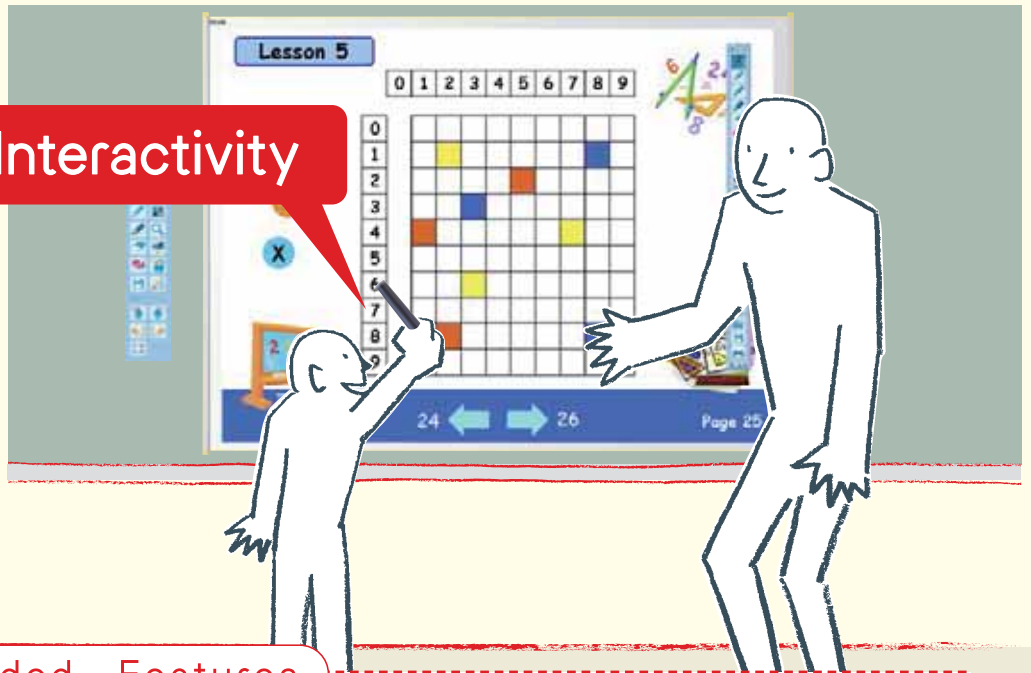
5 Start the "Touch & Draw"
software by double clicking
the shortcut icon.
The toolbar appears.

That's it! You are set to go.

Teachers and students are more engaged.

Teachers can directly operate a computer from the projected image. The UPIC works well with popular interactive educational software. Teachers can better direct their attention to their students when they don't have to worry about operating a computer or consulting a textbook. Teachers and students can draw and erase digitally, as well as insert graphics. Everything can then be saved as a digital image file.

Interactivity



Newly Added Features

- Various figures**
 Triangle, pentagon and hexagon are newly added. Figures and inserted images can be rotated.
- Background fixation during whiteboard mode**
 Background can be fixed during whiteboard mode. Fixed background will not be deleted when selecting "Delete All" to erase the writings and drawings.
- Zoom**
 Clicked or selected area is magnified. Magnified area can be editable. Maximum magnification 1000%.
- Right mouse click**
 Right mouse click is selectable on the menu or by pressing down the digital pen more than 1 sec.

- Multiple pen use**
 Max. 3 digital pens can be used. Color and thickness can be assigned to each pen. Suitable for group use. It can not be used simultaneously. Toshiba Bluetooth Stack is recommended for multiple pen use.
- Copy/Cut/Paste**
 PC like operation can be possible using a digital pen.

Movable Tool Bar (Optional)
 Sheet size: W70×H360mm

This Movable Tool Bar (Magnetic) is a smart attachment offering additional functions to the UPIC. Just attach it near the UPIC sheet. Movable Tool Bar enables you to access to the menu without touching the projected menu on the screen.

- Zoom
- Right mouse click
- Menu On/Off*
- Add figures
- Calibration*
- Page up & down*

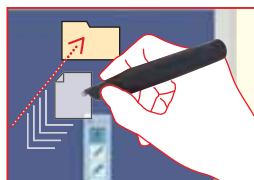
*Only for movable tool bar

(Software version and tool bar design are subject to change for the improvement of the product)

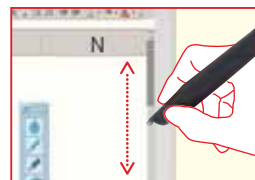
Tool icons are simple and intuitive.



Click-just like with a mouse.



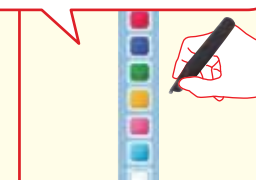
Drag & drop.



Scroll the viewing area.



Mouse, Pen Eraser, Figure functions, etc.

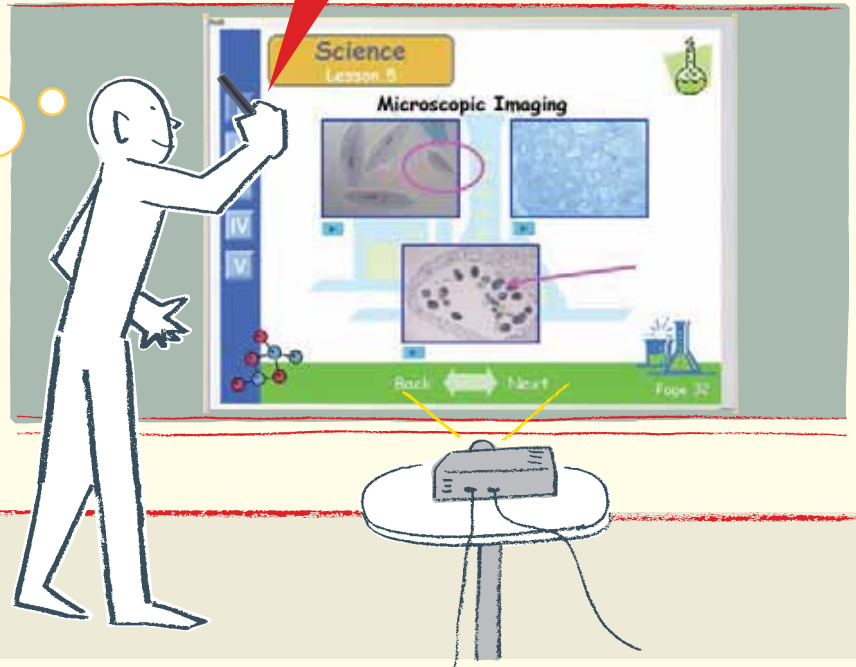
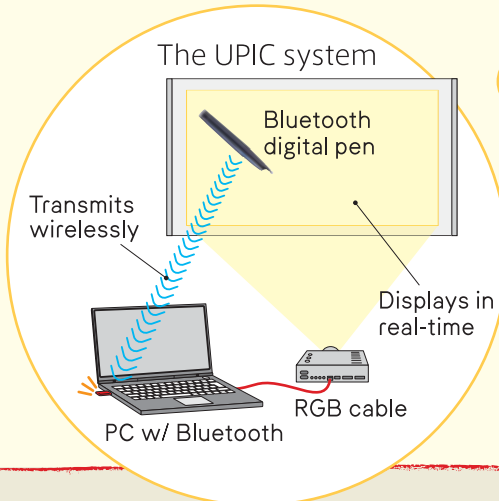


8 color choices. *The menu bar can be switched between horizontal and vertical.

Classes run more smoothly.

The digital pen communicates with the computer wirelessly. Also, no power cord is required since the panel does not require any power. There is never any concern that a teacher or a student might trip over a messy cord.

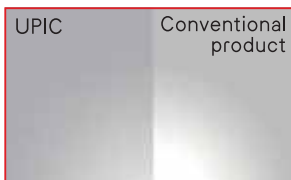
Wireless



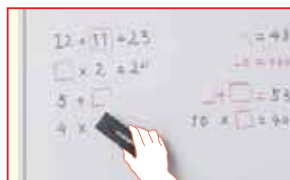
Use as a standard whiteboard or projection screen

With the provided markers and eraser, you can write and erase just like when using a regular whiteboard. Furthermore the UPIC can be used as a projection screen. Its unique surface minimizes the reflection and glare of a projector making viewing projected images more comfortable.

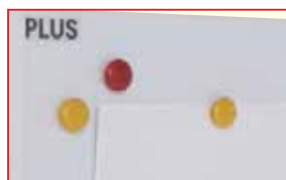
Unique surface



Minimal reflection.



Erases smoothly.
*The provided exclusive eraser is required for erasing.

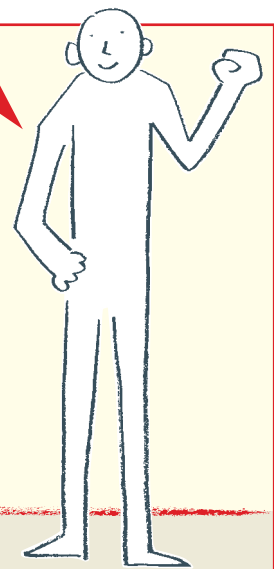


Use magnets with the panel.

Reasonably Priced

The UPIC is less expensive than conventional Interactive whiteboards since the number of materials used in its construction are limited.

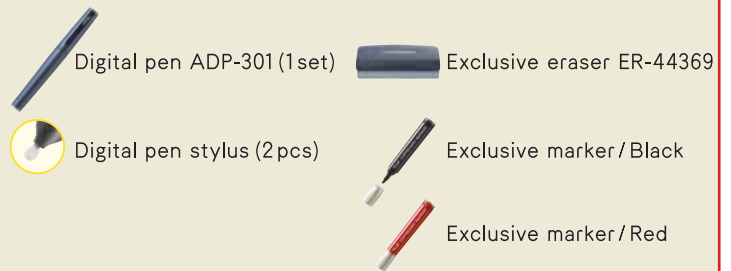
The price is very affordable. It will fit into your often tight education budget.



Package contents ·All items fit neatly into the carrying case.



Options



Specifications

| | Model Name | UPIC-56M | UPIC-64M | UPIC-W72M |
|--|-----------------------------|---|--|---|
| Panel | Type of Installation | Magnetic sheet type | Magnetic sheet type | Magnetic sheet type |
| | External dimensions*1 | W 1160 x D 11.3 x H 865 mm W 45.7 x D 0.4 x H 34.1 inches | W 1330 x D 11.3 x H 995 mm W 52.4 x D 0.4 x H 39.2 inches | W 1630 x D 11.3 x H 1070 mm W 64.2 x D 0.4 x H 42.1 inches |
| | Weight*2 | approx. 1.6 kg / 3.5 lb | approx. 2.1 kg / 4.6 lb | approx. 2.8 kg / 6.2 lb |
| | Size | W 1130 x H 845 mm / W 44.5 x H 33.3 inches | W 1300 x H 975 mm / W 51.2 x H 38.4 inches | W 1600 x H 1050 mm / W 63 x H 41.3 inches |
| | Projection area size | 56 inch (4:3) Max | 64 inch (4:3) Max | 72 inch (16:9) / 70 inch (4:3) Max |
| | Reading system | Reading Anoto dot pattern by using Anoto digital pen | | |
| Digital Pen*3*4*5 | Power Supply | AAA alkaline battery (1.5V) x 1 | | |
| | Interface | Conforming to Bluetooth® 2.0 class | | |
| | Main unit weight | Approx. 40g / 0.1 lb (including battery) | | |
| Operating conditions (including digital pen) | Temperature | 0°C~40°C | | |
| | Humidity | 30~85% (with no condensation) | | |
| Accessories | | Digital pen x 1, Stylus for Digital pen x 1, AAA alkaline battery (1.5V) x 1, Markers (Black and Red x 1), Eraser x 1, Carrying Case x 1, User's manual(simplified) x 1, Manual for Digital pen x 1, CD-ROM (UPIC Utility, UPIC Touch & Draw, User's manual(detailed) [PDF]) x 1 | | |
| Computer requirements*6 | Compatible operating system | Windows XP(Home Edition/Professional Edition Service Pack3 or later) Windows Vista(Service Pack 1 or later 32bit/64bit)/Windows7(32bit/64bit) | | |
| | Compatible computer types | Preinstalled models operating on one of the operating systems above | | |
| | CPU | 1GHz or greater | | |
| | Memory | Windows XP(SP3 or later):512MB/Windows Vista(SP1 or later,32bit/64bit):1GB/Windows7(32bit/64bit):32bit/1GB-64bit/2GB | | |
| | Hard disk | 200MB or greater | | |
| | Display resolution | 1024x768 pixels or greater, High Color or greater | | |

*1: Including maximum protruding parts.

*2: Not including digital pen or accessories.

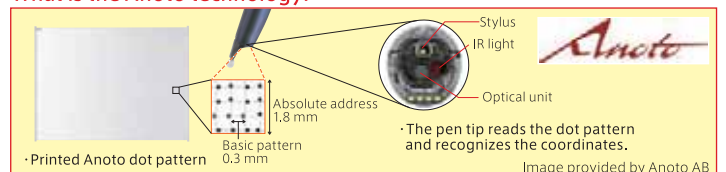
*3: A computer and digital projector are required to draw with the digital pen.

*4: For details on operating principles, etc., see <http://www.anoto.com/>

*5: This product is based on Anoto technology.

*6: This product is not compatible with operating systems: Windows 95/98SE/2000/Me/NT/Server 2003/Mac OS.

What is the Anoto technology?



PLUS Stationery Company Meeting Products Division

Inagi Office 1033-1, Oshitate, Inagi-shi, Tokyo 206-0811 JAPAN TEL: +81-(0)42-370-8216 FAX: +81-(0)42-370-8226
www.plus-vision.com e-mail: plusvision@plus.co.jp

Specifications are subject to change without notice