



AC900



H2i



Kadex



m-Kadex



AC100C



TA100C



Q2i & TA200 Plus



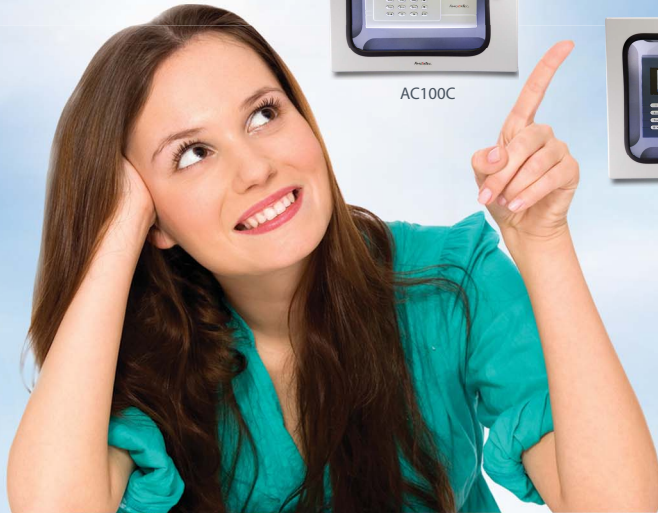
R2



TimeLine 100

Securing Terminals with Enclosure Plus

FingerTec Enclosure Plus is designed to reduce mild surrounding environmental hazards to lengthen the lifespan of FingerTec terminals installed outdoors. Made from zinc metal and tempered glass, the Enclosure Plus fits most FingerTec models for extra protection from dust particles, water and unnecessary vandalism. The enclosure plus is IP56 rated, proving its outstanding protection factor, and comes with an optional feature of a built-in heater paired with a thermostat, ideal for maintaining temperatures in countries with harsh winters.



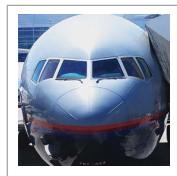
Customized to Fit Perfectly

The Enclosure Plus is customized to accommodate almost all FingerTec terminals, ensuring a perfect fit for each compatible model.



Optional Built-in Heater

Now with the made-to-order thermostat feature, you can maintain the optimal temperature of your FingerTec terminal, even during colder seasons.



Robust Material

The Enclosure Plus is made of zinc metal that protects the FingerTec terminal while the tempered glass does not fade, discolor or crack easily.



Card-friendly

The FingerTec terminal can still perform card verification even when secured inside the Enclosure Plus. The 3mm-thick tempered glass allows the card signal to be transmitted.



Dustproof and Waterproof

The Enclosure Plus helps protect your terminal from dust and vandalism. So don't hesitate to install your terminals outdoors anymore!



Simple Installation

Installing the Enclosure Plus is easy. With a mounting plate included, the Enclosure Plus comes with a user-friendly DIY installation guide for a simple installation.



Lock to Secure

For an additional security measure, the Enclosure Plus can be locked up and secured to prevent unauthorized access and keep the terminal from harm's way.

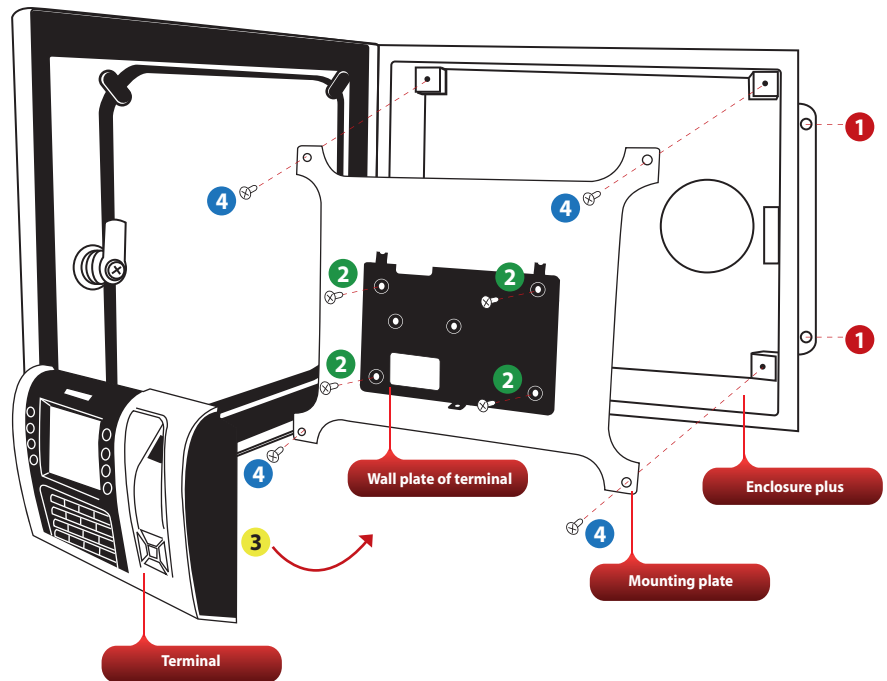


See-Through Panel

Never lose sight of your device. The Enclosure Plus is easy on the eyes with the material allowing 92% of visible light through at a thickness of 3mm.

LAYOUT PLAN

Installation Diagram



1. Mark the installation point and make sure all the wires are ready.
2. Mount the Enclosure Plus on a wall or a surface and tighten the screws to secure its position.
3. Check to make sure all wires pass through.
4. Position the back plate to the installation platform. Tighten the screws to secure the back plate.
5. Hang the terminal on the back plate and tighten the screws to secure the terminal
6. Check to make sure everything is mounted firmly.
7. Place the mounting plate with the terminal into the Enclosure Plus and tighten the 4 screws to secure it firmly.

Note: Installation of Enclosure Plus with access control models

Before you start with step no. 1 above, make sure that all the terminal's wires are put through the enclosure, back plate and wall plate, and all the wires are connected to the terminal's port correctly.



Packaging

Dimension (mm) : 350(L) x 90(W) x 300(H)
Weight : 3.2 kg

SPECIFICATIONS

DIMENSIONS (L X W X H), mm	316 x 94 x 268
WEIGHT, kg	2.92kg
MATERIAL	Zinc metal
THICKNESS	1mm
IP 56	Yes

Authorized Reseller:

FINGERTEC
www.fingertec.com

©2013 FingerTec Worldwide Sdn. Bhd. All rights reserved.