

Canon

Delighting You Always

SOUTH & SOUTHEAST ASIA REGIONAL HEADQUARTERS

Canon Singapore Pte. Ltd.

1 HarbourFront Avenue
#04-01 Keppel Bay Tower
Singapore 098632
Tel: 65-6799-8888
Fax: 65-6799-8882

www.canon-asia.com

CANON OFFICES

HONG KONG

Canon Hongkong Co., Ltd.
Tel : 852-3191-2388
Fax: 852-2369-3800
www.canon.com.hk

INDIA

Canon India Pvt. Ltd.
Tel : 91-124-4160-000
Fax: 91-124-4160-011
www.canon.co.in

MALAYSIA

Canon Marketing (Malaysia) Sdn. Bhd.
Tel : 603-7844-6000
Fax: 603-7845-0505
www.canon.com.my

PHILIPPINES

Canon Marketing (Philippines), Inc.
Tel : 632-884-9000
Fax: 632-894-4174
www.canon.com.ph

SINGAPORE

Canon Singapore Pte. Ltd.
Tel : 65-6799-8888
Fax: 65-6799-8882
www.canon.com.sg

THAILAND

Canon Marketing (Thailand) Co., Ltd.
Tel : 66-2-3449-999
Fax: 66-2-3449-967/68
www.canon.co.th

VIETNAM

Canon Singapore Pte. Ltd.
Ho Chi Minh City Representative
Office & Showroom
Tel : 84-8-8200-466
Fax: 84-8-8200-477
www.canon.com.vn

Hanoi City Representative Office

Tel : 84-4-7711-677
Fax: 84-4-7111-678
www.canon.com.vn

CANON BUSINESS PARTNERS

BANGLADESH

Flora Limited
Tel : 880-2-7162742-46
Fax : 880-2-9550030

BRUNEI

Interhouse Company
Tel: 673-2-6530-01
Fax: 673-2-6530-03

CAMBODIA

i-Click (Cambodia) Pte. Ltd.
Tel : 855-23-966-638
Fax: 855-23-996-639

Royal Cambodia Co., Ltd

Tel : 855-23-4289-55
Fax: 855-23-7229-61

INDONESIA

P.T. Samafitro
Tel : 62-21-3455-521
Fax: 62-21-3844-271

MALDIVES

SIMDI Company (Pvt) Ltd.
Tel : 960-3334-421
Fax: 960-3334-424

MYANMAR

Myanmar Golden Rock
International Co., Ltd.
Tel : 95-1-202092/3/4
Fax: 95-1-202079

NEPAL

International Electronics
Concern (P) Ltd.
Tel : 977-1-4421-991
Fax: 977-1-4421-909

PAKISTAN

Shirazi Trading Co. (Pvt.) Ltd.
Tel : 9221- 32417659
Fax: 9221-32417747

SRI LANKA

Metropolitan Communications (Pvt) Ltd.
Tel : 94-11-2437-797
Fax : 94-11-2448-980

Canon

Delighting You Always

FAX-L170

UPGRADE YOUR EFFICIENCY



- > Print: 18ppm (A4)
- > 512-pages fax reception memory
- > 30-sheet Auto Document Feeder
- > 150-sheets paper cassette
- > Handset included
- > Low-power consumption in Sleep Mode

0163W272

Canon Singapore Pte. Ltd. 2012 – Printed in Singapore

Dealer's Stamp



Business *Can* be simple

FAX-L170

Meet the new Canon FAX-L170. Combining fast laser printing, reliable fax performance, and ultra-low energy consumption, this compact device promises feature-rich functionality and incredible cost-savings. Set your expectations higher than ever before with the Canon FAX-L170.

PRINT AND COPY PRODUCTIVITY

Not just a fax machine, the FAX-L170 is also a fast 18 pages-per-minute (ppm) desktop printer. Ultra-Fast Rendering (UFR II LT) printing language and Canon's unique load balancing architecture reduces reliance on device memory, while On-Demand Fixing technology ensures fast warm-up and recovery times.

Traditional Roller Fixing	On-Demand Fixing
<p>Heating entire roller surface results in longer warm-up time and higher power consumption</p>	<p>Heat transferred directly to fixing film reduces warm-up time and saves energy</p>

And with the 30-sheet Auto Document Feeder (ADF), users can also make copies of multi-page document originals at up-to 11.8 copies per minute (cpm).

EFFORTLESS EASE-OF-USE

An evenly-weighted handset integrates seamlessly with the device body, maintaining its unique compact shape. With a generous 5-line LCD display that also makes it easy to set up the device for the first time, the FAX-L170 is designed for user-friendly operation inside-out.



5 line

MINIMAL MAINTENANCE

The FAX-L170 is virtually maintenance-free, thanks to Canon's All-In-One Toner Cartridge 328.



USEFUL FAX FEATURES

Reliable fax performance is assured with 512-pages fax reception memory, and a 5-minute memory backup feature to prevent accidental data loss. 30-one-touch dials are also available for convenient access to frequent fax destinations.



YOUR PARTNER IN GREEN SAVINGS

The FAX-L170 can be relied on for great cost-savings even when left powered-on all-day. The device drops into Sleep Mode after a period of inactivity, consuming just 1.5W.



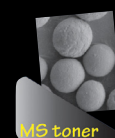
The device also complies with the EU RoHS* directive by eliminating hazardous substances such as mercury, cadmium, lead and hexavalent chromium.



*Restriction of the use of certain Hazardous Substances in electrical and electronic equipment

QUALITY TONER ENGINEERING

Adopting a spherical particle shape, MS-Toner achieves improvements in image processing performance, precise character and overall image quality. MS-Toner also improves melting performance, which assists On-Demand Fixing technology through the use of less heat and pressure.



FAX-L170

SPECIFICATIONS

PRINT	
Printing Method	Monochrome Laser
Print Speed (A4/Letter)	18/19ppm (pages per minute)
Print Resolution	Up to 600 x 600dpi 1200 (equivalent) x 600dpi
Warm-up Time (From Power On)	14 secs or less
First Printout Time (FPOT)	Approx. 7.8 secs (A4), 7.7 secs (LTR)
Recovery Time (From Sleep Mode)	Approx. 3.5 secs.
Print Language/Emulation	UFR II LT
Print Margins	top/5 mm, bottom/6mm, left/5mm, right/5 mm (Other sizes than Envelope) 10 mm-top, bottom, left and right (Envelope)
Print Features	Watermark, Page Composer, Toner Saver
COPY	
Copy Speed	LTR: 12.4cpm (copies per minute) A4: 11.8cpm (copies per minute)
Copy Resolution	600 x 600dpi
First Copy Time (FCOT)	Approx. 22.3 secs (A4), 21.3 secs (LTR)
Maximum Number of Copies	Up to 99 copies
Reduce/Enlargement	50 - 200% in 1% increments
Copy Features	Density Adjustment, Toner Saver
FAX	
Modem Speed	Up to 33.6Kbps
Fax Resolution	Up to 200 x 400dpi
Compression Method	MH, MR, MMR
Memory Capacity *1	Up to 512 pages
One-Touch Dial	30 dials
Speed Dial (One Touch + Coded dials)	Up to 130 dials
Group dials / Destinations	Max. 129 dials / Max. 129 destinations
Sequential broadcast	Max. 140 destinations
Receive Mode	FAX Only, Manual, Answering, Fax/Tel Auto Switch
Memory Backup	Yes, 5 minutes
FAX Features	FAX Forwarding, Dual Access, Remote Reception, PC FAX (TX only), DRPD, ECM, Auto Redial, Fax Activity Reports, Fax Activity Result Reports, Fax Activity Management Reports

*1 Based on ITU-T #1 Chart (standard mode)

*2 Drivers for Mac OS and Windows 64-bit OS can be downloaded from www.canon-asia.com when available

*3 Linux supports printing only. Print driver can be downloaded from www.canon-asia.com when available

PAPER HANDLING	
Auto Document Feeder	30 sheets (80g/m ² or less)
Available Paper Size for ADF	A4, B5, A5, B6, Letter, Legal, Statement, Min. 127 x 139.7mm to Max. 216 x 356mm
Paper Input	Plain Paper (60-80g/m ²); 150-sheet cassette
Paper Output	100 sheets (face down)
Paper Sizes	A4, B5, A5, LGL, LTR, STMT, EXE, OFFICIO, B-OFFICIO, M-OFFICIO, GLTR, GLGL, FLS, 16K, Postcard, Postcard without folding line, Tetrahedral Postcard, Envelope: COM10, Monarch, C5, DL, Custom (Min. 76.2 x 127mm to Max. 216 x 356mm)
Paper Types	Plain, Heavy, Recycled, Transparency, Label, Envelope
Paper Weight	60 to 163g/m ²
CONNECTIVITY AND SOFTWARE	
Standard Interface(s)	USB 2.0 High Speed
Operating System Compatibility	Windows 7 (32/64bit*), Windows Vista (32/64bit*), Windows XP (32/64bit*)/ Windows 2000 Mac® OS X 10.4.9*2 & up, Linux*3
Software Included	Printer Driver, Fax Driver
GENERAL SPECIFICATIONS	
Memory	64MB (max.)
LCD Display	5-line BW LCD
Dimensions (W x D x H)	372 x 303 x 303mm (cassette closed) 372 x 400 x 303mm (cassette opened)
Weight	8.2kg (without cartridge) 8.8kg (with cartridge)
Power Consumption	Max: 1020W or less (max.) During Operation: Approx. 400W (in Copying) During Standby: Approx. 10W During Sleep: Approx. 1.5W
TEC (Typical Electricity Consumption)	0.6kWh/W
Noise Levels	During Operation: Sound Pressure Level (Bystander's position): 53dB (reference value) Sound Power Level: 6.5B or less During Standby: Sound Pressure Level (Bystander's position): Inaudible*4 (reference value) Sound Power Level: 4.3B or less
Operating Environment	Temperature: 10 to 30°C Humidity: 20% to 80% RH (no condensation)
Power Requirements	AC 220 to 240V: 50/60Hz
Toner Cartridge*5	Cartridge 328: 2,100 pages (Bundled cartridge: 1,000 pages)
Monthly Duty Cycle*6	Up to 8,000 pages

*4 "Inaudible" means each Sound pressure level at bystander's position is less than the absolute criterion value about background noise of ISO 7779.

*5 Toner cartridge yield in accordance with ISO/IEC 19752

*6 Monthly Duty Cycle value provides a means for comparison of product robustness in relation to other Canon Laser Devices, and does not refer to actual maximum image output per month.