



The Natural Way To Improve Your Business

The L3000 offers everything you need for your **high-volume faxing** needs: **enormous memory, double-sided copying & faxing capabilities** and **large expandable paper capacity**. Both incoming and outgoing faxes boast exceptional image quality. The efficient Dual Access function allows it to perform **different tasks simultaneously**, so even more gets done. It's easy to upgrade, so it expands along with your business. Naturally, the L3000 is **environment friendly!**

Canon Sales Subsidiaries & Business Partners:

Bangladesh:

Flora Limited
Adamjee Court Annex-2 (4th Floor),
119-120, Motijheel Commercial Area,
Dhaka-1000 Bangladesh
Tel: +880-2-956 7846
Tel: +880-2-955 0030
www.floralimited.com

Brunei:

Interhouse Company
P.O. Box 423, Seri Complex BA1779
No. 5-7, Bunut Jaya Complex Spg. 574, Kim
7 1/4, Jalan Tutong Bandar Seri Begawan
BF1320 Negara Brunei Darussalam
Tel: 673-2-653 001
Fax: 673-2-653 003

Cambodia:

Royal Cambodia Co. Ltd.
#437 Preah Monivong Blvd.
Phnom Penh, Kingdom of Cambodia
Tel: 855-23-428955
Fax: 855-23-722961

Hong Kong:

Canon Hong Kong Co. Ltd.
Domestic Sales Office
19/F, The Metropolis Tower,
10 Metropolis Drive
Hunghom, Kowloon, Hong Kong
Tel: 852-2170 2888
Fax: 852-2723 3943
www.canon.com.hk

India:

Canon India Private Limited
2nd Floor, Tower A & B
Cyber Greens, DLF Phase III
Gurgaon - 122022
Haryana, India
Tel: 91-124-516 0000
Fax: 91-124-516 0011
www.canon.co.in

Indonesia:

PT Samafitro
Jalan Ir. H Juanda No.8
Jakarta 10120 Indonesia
Tel: 62-21-345 5521
Fax: 62-21-384 4271
www.samafitro.co.id

Malaysia:

Canon Marketing (Malaysia) Sdn. Bhd.
Block D, Peremba Square
Saujana Resort Section U2, 40150 Shah Alam
Selangor Darul Ehsan, Malaysia
Tel: 03-7844 6000, 03-7845 0055
Fax: 03-7845 0505
www.canon.com.my

Maldives:

SIMDI Company Pvt Ltd.
Manaam Building
2/1 Neelofaru Magu
20-129 Male
Rep. of Maldives
Tel: 960 3334421
Fax: 960 3334424

Myanmar:

Accel International Co. Ltd.
FJV Commercial Centre
Level 6, No. 422-426
Strand Road, Botataung Township
Yangon, Myanmar
Tel: 951-202 092 to 96
Fax: 951-202 079

Nepal:

International Electronics Concern (P) Ltd.
Kha 14 1st Floor, Haratibhawan, Putalisadak,
Ramshah Path, Kathmandu, Nepal
Tel: +977-1-442 1991
Fax: +977-1-442 1909

Pakistan:

Shirazi Trading Company (Pvt) Ltd.
8th Floor, Adamjee House I.I. Chundrigar Road
Karachi, Pakistan
Tel: 92-21-241 7737
Fax: 92-21-242 0417
www.shirazitrading.com.pk

Philippines:

Canon Marketing (Philippines) Inc.
Marvin Plaza Building
2153 Don Chino Roces Avenue
Makati City Metro Manila Philippines
Tel: 632-884 9000
Fax: 632-894 4174
www.canon.com.ph

SOUTH & SOUTHEAST ASIA REGIONAL HEADQUARTERS

CANON SINGAPORE PTE. LTD.
1 HarbourFront Avenue #04-01
Keppel Bay Tower, Singapore 098632
Tel: 65-6799 8888 Fax: 65-6799 8882
www.canon-asia.com

Sri Lanka:

Metropolitan Communications (Pvt) Ltd.
85 Braybrooke Place Colombo 2
Sri Lanka
Tel: 94-11-243 7797
Fax: 94-74-244 8980

Thailand:

Canon Marketing (Thailand) Co. Ltd.
10th Floor Bangkok City Tower
179/34-45 South Sathorn Road
Bangkok 10120
Tel: 66-0-2344 9999
Fax: 66-0-2344 9910
www.canon.co.th

Vietnam:

Canon Singapore Pte. Ltd.
Ho Chi Minh City Representative Office
Unit 437 - 439 - 441 Hai Ba Trung Street
Ward 8, District 3, Ho Chi Minh City, Vietnam
Tel: +(848) 820 0466
Fax: +(848) 820 0477

Hanoi City Representative Office
Unit 601 & 602, Viet Au Building
205 Giang Vo Street, Dong Da District
Hanoi, Vietnam
Tel: 84-4-5121 033
Fax: 84-4-5121 022
www.canon.com.vn



DEALER'S STAMP

Canon Singapore Pte. Ltd. 2007 - Printed in Singapore
0113W325

Canon

Delighting You Always

THE PROFESSIONAL CHOICE FOR HIGH-VOLUME, HIGH- SPEED, HIGH-QUALITY FAXING



RELIABLE & CLEAR FAXING

- Super-G3 Fax
- Large fax memory of up to 512 pages with 3-hour fax memory back up
- 256 greyscale levels

EFFICIENT & COST SAVING

- 50-sheet DADF
- Two-sided faxing
- 500-sheet paper cassette + optional 500-sheet cassette for upgrade
- Network-ready Printer Kit

OPTIONAL NETWORK PRINTING

- Up to 22 pages per minute
- 1200 dpi resolution
- Auto two-sided/booklet printing

SECURITY

- Department ID Management (100 users)

L 3 0 0 0

Business *can* be simple

Canon
Delighting You Always



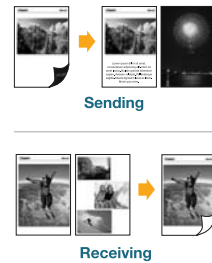
Built for the big job – huge paper-handling capacity

The L3000 is ideal for high-volume faxing. It has a **600-page capacity** (500-sheet cassette and 100-sheet multipurpose tray) so you won't be constantly refilling it with paper. Add an optional **500-sheet paper** cassette and the capacity jumps to **1100 pages!**



50-sheet duplex automatic document feeder (DADF) – send & receive 2-sided faxes

The **50-sheet DADF** automatically scans both sides of a two-sided document during faxing. No manual turning is necessary. You also save time and paper when you receive **two-sided faxes**, a convenient to **increase efficiency** and **lower costs**.



Faster faxing – keep costs under control

With **Super G3 transmission**, faxing is incredibly fast, keeping your phone costs to a minimum. It takes as little as **1.62 seconds** to scan an A4 document, which means you can scan up to **37 documents per minute**. The L3000 also prints up to **22 pages per minute**, so you receive faxes almost instantly.



See it clearly – excellent image quality

Whether you're sending or receiving documents, you can count on superior image quality for text, diagrams and even photographs. Canon's **Ultra High Quality (UHQ™) technology** ensures excellent precision and detail for every document you send. And with **256 grayscale** level and a print resolution of up to **1200 x 600 dpi**, any fax you receive will be crystal clear.



Expandable – optional network printing

You can add an optional Network Printer board and transform the L3000 into an incredibly productive network printer. It's fast, printing up to **22 pages per minute**, and with a resolution of up to **1200 dpi**, quality is excellent. Sending faxes via PC is also possible with its embedded network PC-Fax driver in the Network Printer Kit. Raise the efficiency of your office to a new level.

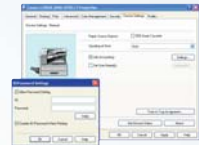


Better cost control with double-sided/booklet printing & Dept ID management

The L3000 automatically prints on both sides of the paper – **no manual turning** is required. Choose the Booklet Printing option and your double-sided documents are bound into a convenient booklet. Either way, you'll use **less paper**, limit the amount of space needed to store documents and **lower overall costs**.



And for better cost control, the Department ID Management feature enables companies to register **up to 100 IDs** in the L3000. Upon activation, every user needs to enter the assigned ID to access the machine for any usage. ID Control for Printing is also available when the **Network Printer Kit** is installed. This allows companies to better manage and budget their yearly **operational costs**.



Speed dialing – time-saving convenience

It's a waste of time to search for numbers and spend a long time dialing each time you send a fax. The L3000 improves your workflow by allowing you to program up to **80 one-touch dials** and **120 coded dials**. Faster, more efficient faxing just makes good business sense.



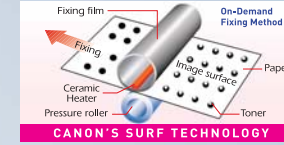
Never miss sending or receiving a fax – large memory

The L3000 has large built-in memory: **64MB RAM**. It can store up to **512 pages** of both incoming and outgoing faxes. The L3000 also has a **three-hour fax memory** back up, so even during a power failure you won't miss a fax.

512 Pages

Environment friendly – On-Demand Fixing technology

Canon's **On-Demand Fixing technology** virtually eliminates warm-up time, making it possible to lower energy consumption by up to **75%**. This is because the fixing roller does not need to be kept warm during standby. You benefit from lower operating costs while placing less strain on the environment.



RoHS compliant – safe for the office & the environment

The **RoHS Directive** was established by the European Union and restricts the use of certain hazardous substances in electrical and electronic equipment. Canon has long been at the forefront of **environmental** and **safety issues**, so naturally the L3000 is fully compliant with RoHS – supporting a healthy and successful business environment.



Highest quality and convenience – Canon's All-in-One cartridge system

The Canon **All-in-One Cartridge System** contains the toner and all other essential parts, making it incredibly convenient and hassle free. However, you won't be changing cartridges often: a single **FX12 cartridge** can print up to **4500 pages***. But the greatest thing about using **Genuine Canon Consumables** is that you are ensured the absolute best performance and highest image quality possible.



* Based on ITU-T Standard Chart No. 1



FX12 All-in-One Cartridge
You can only trust Genuine Canon Consumables for highest quality output and maximum performance from your Canon machines.

L 3 0 0 0

Specifications

FAX	
Modem Speed	Super-G3 (33.6kbps)
Fax Resolution	203 x 391 dpi (Superfine)
Memory Capacity	512 pages* (up to 1500 pages* with Network Printer Kit installed)
Speed Dial	80 one-touch, 120 coded, 199 group dials
Sequential Broadcasting	201 Destinations
Compression Modes	MH, MR, MMR, JBIG
Receive Mode	Fax Only, Manual
Fax Features	
Remote RX	Yes
Polling	No
Relay	No
Subaddress	No
Delayed TX	Yes
Dual Access	Yes
Others	Tx/Rx Report; Activity Report (every 40 transactions)
Fax Memory Backup	Yes (3-hour)
Duplex Function	Yes (outgoing & incoming fax printing)

COPY

Type	Monochrome Laser
Copy Speed	22 cpm/A4, 23 cpm/LTR
Copy Resolution	600 x 600 dpi
Copy Quality	1200 x 600 dpi (enhanced)
Halftones	256 level
Warm-up Time	20 secs from power on
First Copy Time	Less than 15 seconds
Paper Feeding	500-sheet cassette 100-sheet Multipurpose tray
Optional Cassette	Yes (500-sheet)
Paper Weight	64-80g/m2 (cassette) 56-128g/m2 (Multipurpose tray)
Paper Output	100-sheet
Duplex Function	Yes (only A4R/LTR/LGL/16R) 2-2 sided, 2-1 sided, 1-2 sided
Enlargement	141%, 145%
Document Feeder (DADF)	50-sheet
Copy Size	Up to A4 (DADF/LGL (ADF))
Copy Features	Electronic Sort, Duplex copying
Copy Memory	64MB (Share)

PRINT (NETWORK PRINTER KIT) - OPTIONAL

Print Speed	22 cpm/A4; 23cpm/LTR
Print Resolution	600 x 600 dpi
Print Quality	1200 x 600 dpi (enhanced)
Duplex Function	Yes (only A4R/LTR/LGL)
PDL	UFRII Lite
Print Memory	64MB (Share)
System Memory (On Board)	64MB (Share)

PC INTERFACE & SOFTWARE

Standard Port	USB 2.0 High Speed
Network Interface	10/100 Base T
Type	Embedded
Network Print	Yes (With N/W option)
Network PC Fax	Yes (With N/W option)
Network Scan	No
Bundle Software	Driver
OS Compatibility	Windows 98, ME, 2000, XP, Vista, MAC OSX* * Mac OSX is not bundled with product * Support MAC OS 10.2.8 - 10.4.6

GENERAL SPECIFICATIONS

Power Consumption	
Sleep	approx. 3.0w (With N/W 3.5w)
Max	<1010W
Standby	17W
Energy Star	Yes
Acoustic Noise Levels	66.7 db
Power Source	220 - 240V, 50/60Hz
ID Security	Yes (100 locations)
Dimensions (Main Unit) - W x D x H	520 x 481 x 451 mm
Weight (inc. Cartridge)	24.6kg
Environment Conditions	
Temperature	15 °C - 30 °C
Humidity	10% - 80% RH

Consumables

Toner Cartridge	FX12 Cartridge
Yield	4,500 pages* (Starter cartridge yield: 2000 pages*)

Optional Accessories

FXL-Cassette Feeder 8 (A4)	Yes (500-sheet Capacity)
UFRII LT P. KIT-X1	Yes (Network-enabled)
STAMP UNIT-C1	Yes
Handset	Yes

* Based on ITU-T Standard Chart No. 1, JBIG standard mode



All information contained in this brochure is correct at the time of printing. Some information could become dated due to product improvements or other changes. Canon bears no responsibility for any discrepancies.