

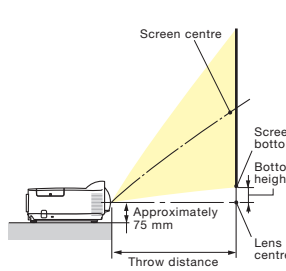
Specification

	M350XS	M300XS	M260XS	M300WS	M260WS	
LCD Panel	0.63 inch LCD with Micro Lens Array (Aspect Ratio 4:3) Dichroic mirror separation-prism convergence system		0.59 inch LCD with Micro Lens Array (Aspect Ratio 16:10) Dichroic mirror separation-prism convergence system			
Resolution*1	1024 x 768 pixels		1280 x 800 pixels			
Lens	Digital Zoom / Manual Focus, Zoom ratio 1 to 1.2, Throw ratio 0.47, F2.0, f=6.4mm					
Lamp	265W AC (195W in ECO1)	230W AC (170W in ECO1)	180W AC (145W in ECO1 / 90W in ECO2)	265W AC (195W in ECO1)	230W AC (170W in ECO1)	
Lamp Life*2 (Eco Mode On / Eco Mode Off)	3500H / 3000H	5000H / 4000H	6000H / 5000H	3500H / 3000H	5000H / 4000H	
Image Size (Projection Distance)	60 to 110 inch (57.3cm to 110.1cm)		56 to 104 inch (56.9cm to 110.4cm)			
Colour Reproduction	10-bit signal processing (1.07 billion colours) (VIEWER, NETWORK : 16.7 million colours)					
Light Output*3,4	Eco Mode Off 3500 ANSI lumens	Eco Mode Off 3000 ANSI lumens	Eco Mode Off 2600 ANSI lumens	Eco Mode Off 3000 ANSI lumens	Eco Mode Off 2600 ANSI lumens	
	Eco Mode On ECO1 : 75%	Eco Mode On ECO1 : 75%	Eco Mode On ECO1 : 80% / ECO2 : 50%	Eco Mode On ECO1 : 75%	Eco Mode On ECO1 : 75%	
Contrast Ratio (White / Black)*4	2000:1					
Maximum Resolution	UXGA (1600 x 1200) with Advanced AccuBlend					
Scan Rate	HDTV (1920 x 1080) with Advanced AccuBlend 15kHz to 100kHz (RGB : 24kHz or over) 50Hz to 120Hz (HDMI : 50Hz to 85Hz)					
Keystone Correction	Vertical Auto / Manual Approx. ±Max 20 degrees					
Input Terminals	2 Computer Input 2 D-Sub Mini 15pin 2 Stereo Mini Jack 2 D-Sub Mini 15pin (Shared with Computer IN) 1 HDMI Input 1 S-Video Input 1 Video Input					
Output Terminals	1 RGB Output 1 Audio Output					
USB Port	1 Type A 1 Type B					
Wired LAN Port	1 RJ-45					
Wireless LAN (USB Port)	1 Type A					
Control Terminal	PC Control 1 D-sub 9Pin					
Built-In Speaker	10W Monaural					
Quietness (Eco Mode On / Eco Mode Off)	30dB / 36dB	29dB / 35dB	29dB / 35dB	30dB / 36dB	29dB / 35dB	
Environment	Operational Temperatures Storage Temperatures					
Power Requirement	100 to 240V AC, 50Hz/60Hz					
Input Current	3.9A - 1.7A	3.4A - 1.5A	2.8A - 1.2A	3.9A - 1.7A	3.4A - 1.5A	
Power Consumption	Eco Mode Off 200 - 240V Eco1 Mode 200 - 240V Eco2 Mode 200 - 240V Standby Mode 200 - 240V Power-saving Mode 200 - 240V	100 - 130V 200 - 240V 100 - 130V 200 - 240V 100 - 130V 200 - 240V 100 - 130V / 200 - 240V 100 - 130V 200 - 240V	358W 343W 271W 236W -	311W 302W 239W 193W 138W 8W 0.2W 0.4W	358W 343W 271W 264W -	311W 302W 239W 236W -
Calorific Value	100 - 130V 200 - 240V	1222BTU (Max) 1170BTU (Max)	1061BTU (Max) 1030BTU (Max)	846BTU (Max) 816BTU (Max)	1222BTU (Max) 1170BTU (Max)	
Dimensions (W x H x D)	398mm x 140mm x 309mm (Not Including Protrusions)					
Weight	4.0kg					
Accessories	Remote control, Batteries(AAA x 2), Computer cable, Power code, User's manual(CD-ROM), Quick setup guide, Important information					
Regulations	For United States UL Approved (UL 60950-1), Meets FCC Class B Requirements For Canada C-UL Approved (CSA 60950-1), Meets DOC Canada Class B Requirements For Asia/Oceania IEC60950-1, Meets AS/NZS CISPR.22 Class B For Korea KC (safety : K60950-1, EMC : K00022, K00024, K61000-3-2) For China GB4943, GB9254, GB17625.1 For Russia Gost R 60950-1, 51318.22, 51317.3.2./3.3.					

*1 : Effective pixels are more than 99.99%.
 *2 : Lamp life is defined as the average time span for the brightness of the lamp to be reduced by half, it does not refer to the warranty period for the lamp.
 *3 : This is the light output value (ANSI lumens) when the [PRESET] mode is set to [HIGH-BRIGHT]. If any other mode is selected as the [PRESET] mode, the light output value may drop slightly.
 *4 : Compliance with ISO21118-2005

All specifications are subject to change without notice.

● **Throw Distance and Screen Size**



M350XS/M300XS/M260XS (Aspect ratio 4:3)

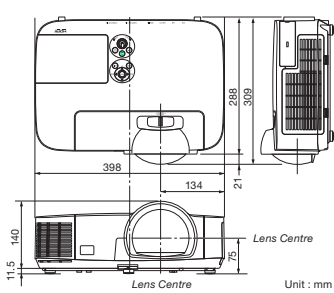
Screen size (inch)	Throw distance (cm)	Bottom height (cm)
60 (1.22x0.91)	57.3	0
72 (14.6x11.0)	70.0	0
80 (1.63x1.22)	78.4	0
84 (17.1x12.8)	82.7	0
90 (18.3x13.7)	89.0	0
100 (2.03x1.52)	99.6	0
110 (22.4x16.8)	110.1	0

M300WS/M260WS (Aspect ratio 16:10)

Screen size (inch)	Throw distance (cm)	Bottom height (cm)
56 (1.21x0.75)	56.9	7.6
60 (1.22x0.91)	61.1	8.1
70 (1.51x0.94)	72.3	9.4
80 (1.72x1.08)	83.5	10.8
90 (1.94x1.21)	94.7	12.1
100 (2.15x1.35)	105.9	13.5
104 (2.24x1.40)	110.4	14.0

The values in the tables are design values and may vary.

● **Cabinet Dimensions**



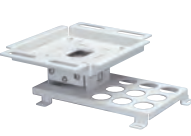
● **Remote control**
(included accessory)



● **Options**



Replacement lamp
 NP15LP (M260XS)
 NP16LP (M300XS/M260WS)
 NP17LP (M350XS/M300WS)



Ceiling mount kit
 NP12CM



Wireless LAN unit
 NP02LM1
 NP02LM2
 NP02LM3



Cable cover
 NP01CV

Ultra short throw projector
**M350XS/M300XS/M260XS/
 M300WS/M260WS**

Ultra short throw projectors ideal for classrooms and meeting areas.



⚠ The projector can be unplugged during its cool down period after it is turned off.
 Parts of the projector will become heated during operation. Use caution when picking up the projector immediately after it has been operating.
 Use caution when putting the projector in the soft case immediately after the projector has been operating. The projector cabinet is hot.

●Virtual Remote Tool uses Win2C/DDC library, © Nicomsoft Ltd.
 ●HDMI, the HDMI Logo and High-Definition Multimedia Interface are trademarks or registered trademarks of HDMI Licensing LLC.
 All other trademarks are the property of their respective owners.
 The images in this brochure are samples.
 This brochure uses recycled paper.



Ultra short throw projectors with up to 3500 lumens*, able to install in any location, providing a large screen at a short range.

*For M350XS



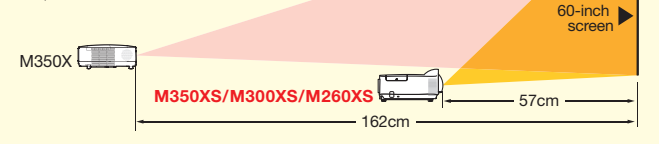
An ultra short throw projector that can be installed and used anywhere

Ultra short throw projection optimal for classrooms and meeting areas

Thanks to the ultra short throw lens, the M350XS, M300XS and M260XS can project large 60-inch images from a short range of about 57cm. The projector takes little space and is easy to setup.

Projection comparison with the M350X

*Throwing distance of M300WS/M260WS for a 60-inch screen is 61cm, compared with 171cm of M300W.



A geometric correction function to enable projection to a screen on an angle*

*Use the included Image Express Utility Lite software

Advanced functionality designed for ease of operation

A USB display function for simple connection with a single USB cable

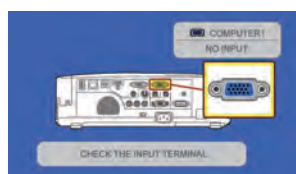
The USB display function lets you connect the projector and a computer with a standard USB cable to easily project computer screen images without computer cables.



Connect a USB cable to a USB port

"No-signal guidance" for easy cable connections

When there is no signal being input, the "No-signal guidance" display appears on the screen. Since you know in a glance where the cable should be inserted, your setup runs smoothly.



A guidance to tell no signal input

Supports Virtual Remote Tool for operation of projectors from a computer

*Use the included Virtual Remote Tool software.

High-brightness display of 3500 lumens (M350XS)

The M350XS is an ultra short throw projector that achieves a high brightness of 3500 lumens. This makes it possible to use the projector without turning off room lighting so you can see documents in your hand while participating in a meeting.

Built-in monaural speaker with a powerful 10 W output that provides excellent sound even in classrooms and conference rooms

Designed for a low noise level of 29dB* (in Eco Mode) that doesn't disturb conferences or lessons

The RPM of the fan has been reduced and operation noises have been suppressed for a substantial reduction in noise.

* For M300XS/M260XS/M260WS

The Quick Start function starts projection a mere 3 seconds after the power is switched on

Quick Cooling and Direct Power Off for speedy clean-up and transfer after use

Images can be sent over a LAN using the wired/wireless LAN option*

*Use the included Image Express Utility Lite software



Optional Wireless LAN unit**

**Model name of the optional wireless LAN unit varies depending on the country where the unit is used (or to be used).
 NP02LM1 : United States, Canada, Mexico, Taiwan, Brazil, Colombia
 NP02LM2 : Europe, United Arab Emirates, Saudi Arabia, Oman, South Africa, Turkey, Ukraine, Egypt, Israel, Australia, New Zealand, Japan, Thailand, China, Hong Kong, Singapore, South Korea, Malaysia, Sri Lanka, Pakistan, Vietnam, India, Indonesia, Philippines, Peru, Chile, Argentina, Ecuador
 NP02LM3 : Russia

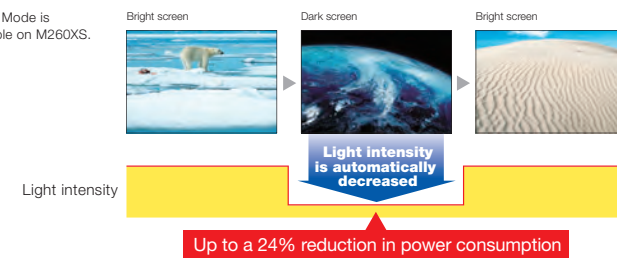
Front ventilation for effective heat dissipation

Added functions for the economical use of energy and the reduction of total cost of ownership

Equipped with an automatic Eco Mode to automatically control picture brightness

Eco Mode reduces light intensity automatically and imperceptibly when switching from white screens like charts or bright images to a dark screen or image. This function can reduce the power consumption by up to 24%. Both the projector and its remote are equipped with an Eco button for easy setting of Eco Mode. Eco2 Mode*, which is convenient when it's too bright during small screen projection.

*ECO2 Mode is available on M260XS.



Lengthen lamp lifetime

Using Eco Mode can increase the lamp lifetime to 6000 hours*. Furthermore, the low-energy design keeps power consumption to 0.2W (100-130V AC)/0.4W (200-240V AC) during standby (Power-saving Mode), which helps reduce total cost of ownership.

*For M260XS. This is not a guaranteed value.

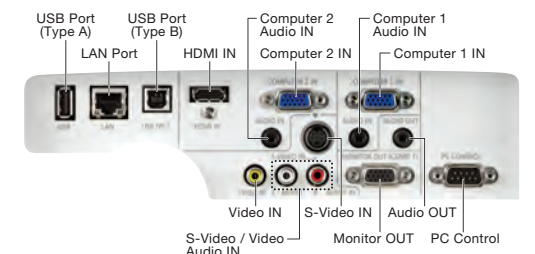


Equipped with a large, maintenance-free filter

The large filter has the two-layer construction. It provides excellent dust protection and eliminates the need for regular cleaning. Just replace the filter when you change the lamp.



Terminals



M350XS

3500 ANSI lumens XGA 4.0kg

M300XS

3000 ANSI lumens XGA 4.0kg

M260XS

2600 ANSI lumens XGA 4.0kg

M300WS

3000 ANSI lumens WXGA 4.0kg

M260WS

2600 ANSI lumens WXGA 4.0kg